



Florida Department of
TRANSPORTATION

SR A1A / South Ocean Boulevard
From North of Ibis Way to North of Emerald Beach Way
FPID: 448417-1-52-01



Public Meeting
Tuesday, February 25, 2025
THE PRESENTATION WILL BEGIN AT 6:00 PM

SR A1A / South Ocean Boulevard
From North of Ibis Way to North of Emerald Beach Way
FPID: 448417-1-52-01



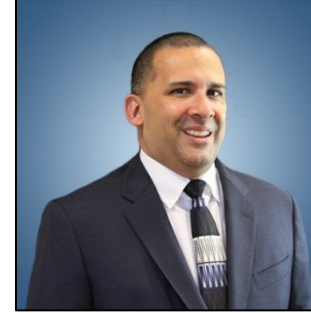
Public Meeting
Tuesday, February 25, 2025

Meet the Team



Vandana Nagole, P.E., CPM

FDOT Project Manager
FDOT District Four,
Consultant Management



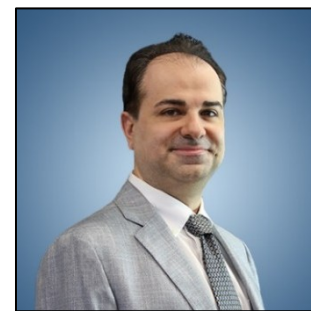
Julio Delgado, P.E.

Consultant Project Manager
Scalar Consulting Group Inc.



Nick Clavelo, P.E.

Consultant Deputy Project Manager
Scalar Consulting Group Inc.



John Scarlatos

Public Involvement Support
Scalar Consulting Group Inc.





WHAT WE DO AT FDOT



Our Mission:

The mission of the Florida Department of Transportation is to provide a safe statewide transportation system that promotes the efficient movement of people and goods, supports the state's economic competitiveness, prioritizes Florida's environment and natural resources, and preserves the quality of life and connectedness of the state's communities.

Our Vision:

As one FDOT team, we serve the people of Florida by providing a transportation network that is well planned, supports economic growth, and has the goal of being congestion and fatality free.



The FDOT vision is guided by our compass with communities at the center of our compass. That is why we are here today.

Understanding each community's unique needs and priorities allows us to collaboratively build a transportation system that improves connectivity, enhances the quality of life for our residents and visitors, and creates a shared community vision.

Agenda

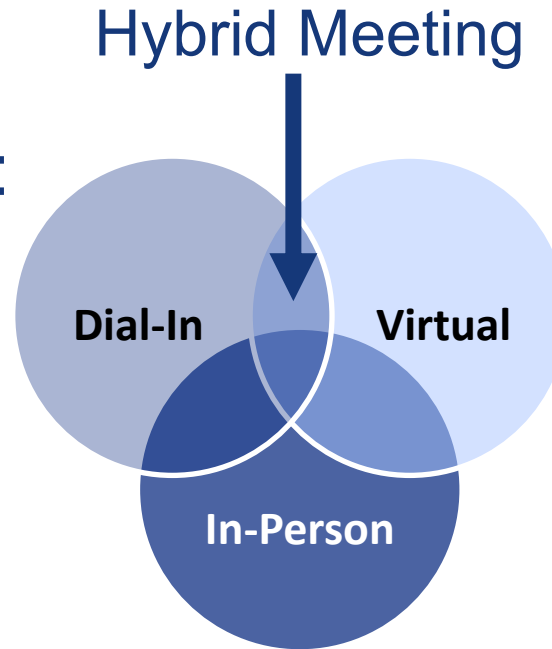
- 1. Technical Information and Public Meeting Notifications**
- 2. Non-Discrimination Policy and Rules of Engagement**
- 3. Project Location, Overview, and Safety Improvements**
- 4. Roadway Typical Sections**
- 5. Temporary Traffic Control Plan**
- 6. Decorative Features During Construction**
- 7. Project Schedule and Construction Cost**
- 8. Questions and Answers**
- 9. Closing and Contact Information**

Technical Information and Public Meeting Notifications

Technical Information

This public meeting is being conducted in a hybrid format:

- In-Person
- Virtual
- Dial-in



Dial-in attendees are “listen only”.

A copy of this presentation and recording will be posted on the Project Website at:

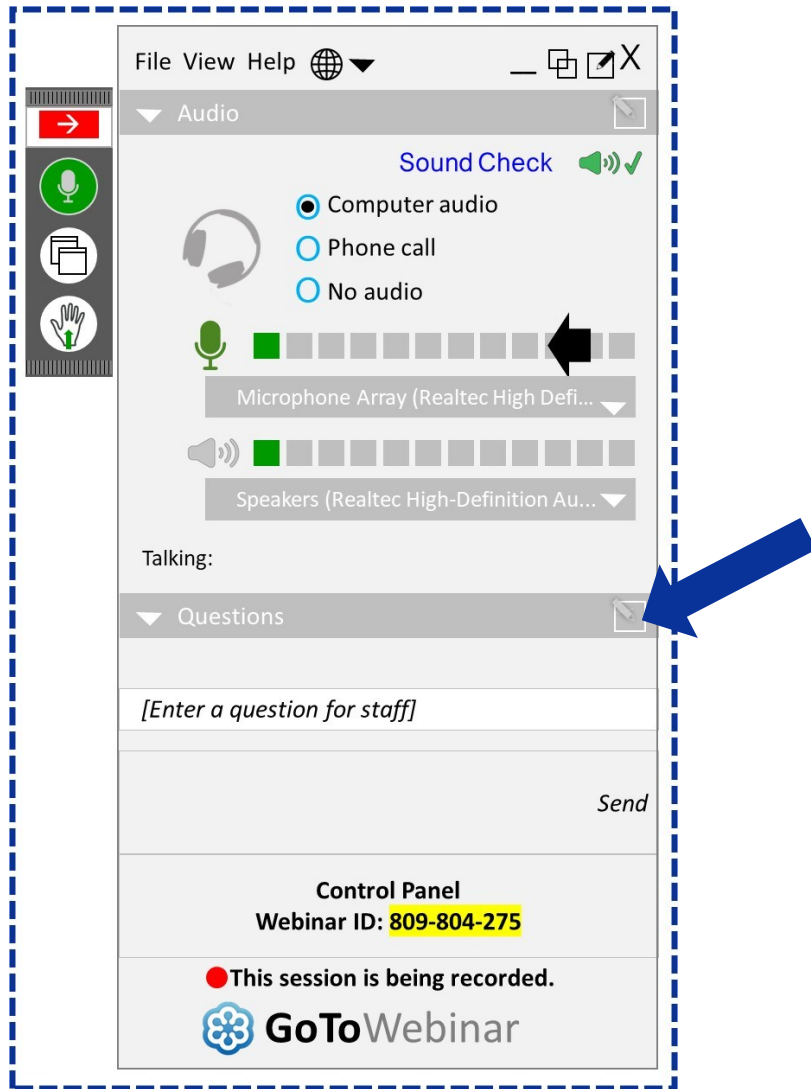


<https://tinyurl.com/448417-1-SR-A1A-Project>

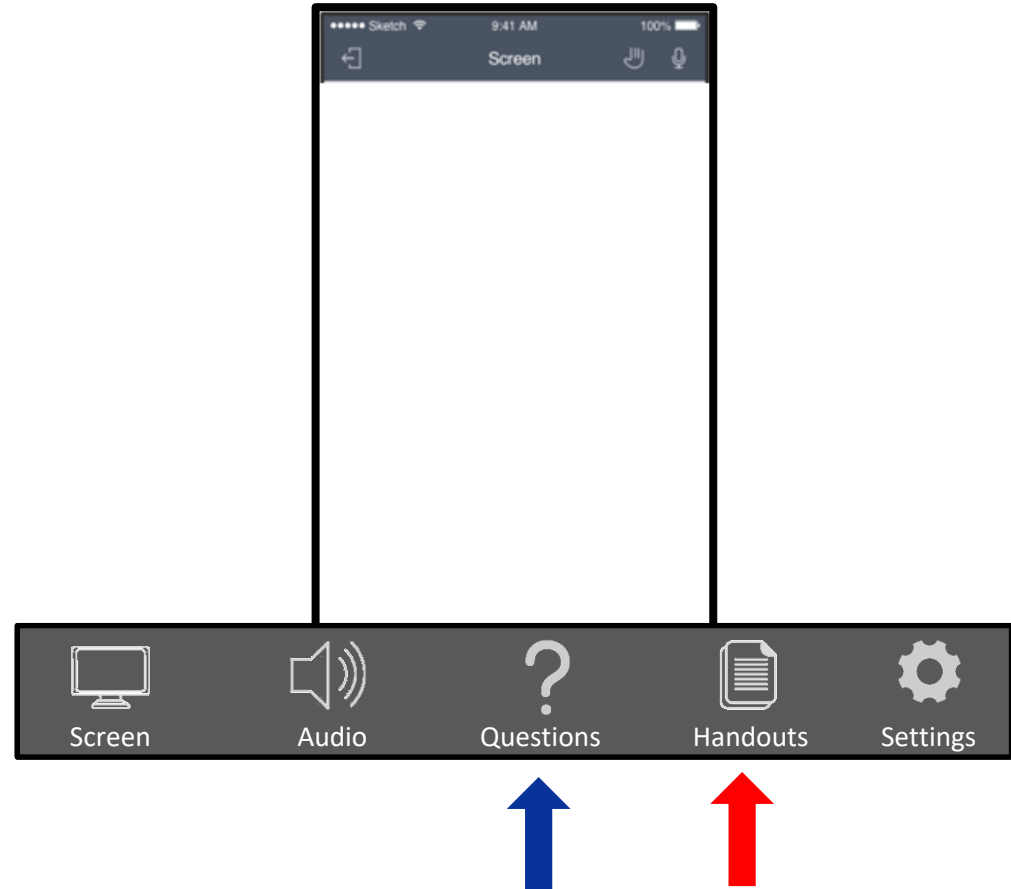


SCAN ME

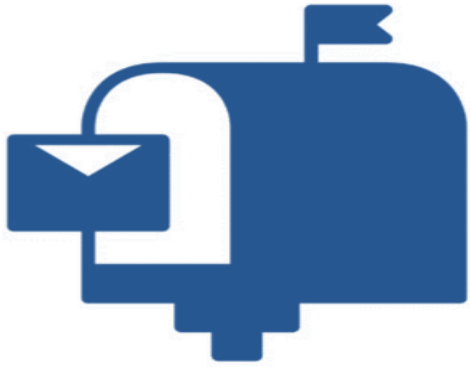
Additional Technical Information



Mobile



Public Information Notifications



Property Owner/Tenant Letters



Email to Project Contact List

Florida Department of State

**FLORIDA ADMINISTRATIVE CODE &
FLORIDA ADMINISTRATIVE REGISTER**

Florida Administrative Register



Social Media

Non-Discrimination Policy and Rules of Engagement

Non-Discrimination Policy



The Florida Department of Transportation complies with various non-discrimination law and regulations, including:

Title VI of the Civil Rights Act of 1964

Public participation is solicited without regard to race, color, national origin, age, sex, religion, disability, or family status.


For questions or concerns, you may contact either:

District Four

Florida Department of Transportation
District 4 Title VI Coordinator

Sharon SinghHagyan

Title VI Program Office

 3400 West Commercial Boulevard
Fort Lauderdale, FL 33309-3421

 (954) 777-4190

 Sharon.SinghHagyan@dot.state.fl.us

Tallahassee Office

Florida Department of Transportation
Statewide Title VI Coordinator

Stefan Kulakowski, FCCM, CPM

Equal Opportunity Office

 605 Suwannee Street, MS 65
Tallahassee, Florida 32399-0450

 (850) 414-4742

 Stefan.Kulakowski@dot.state.fl.us

Rules of Engagement



This Public Meeting is being recorded.

If you experience technical difficulties, please contact **GoToWebinar Support at +1(833) 851-8340**



All **Virtual** attendees **will remain muted** throughout the Meeting.

We also kindly ask the in-person audience to please try and remain silent during the meeting to prevent any audio discrepancies.

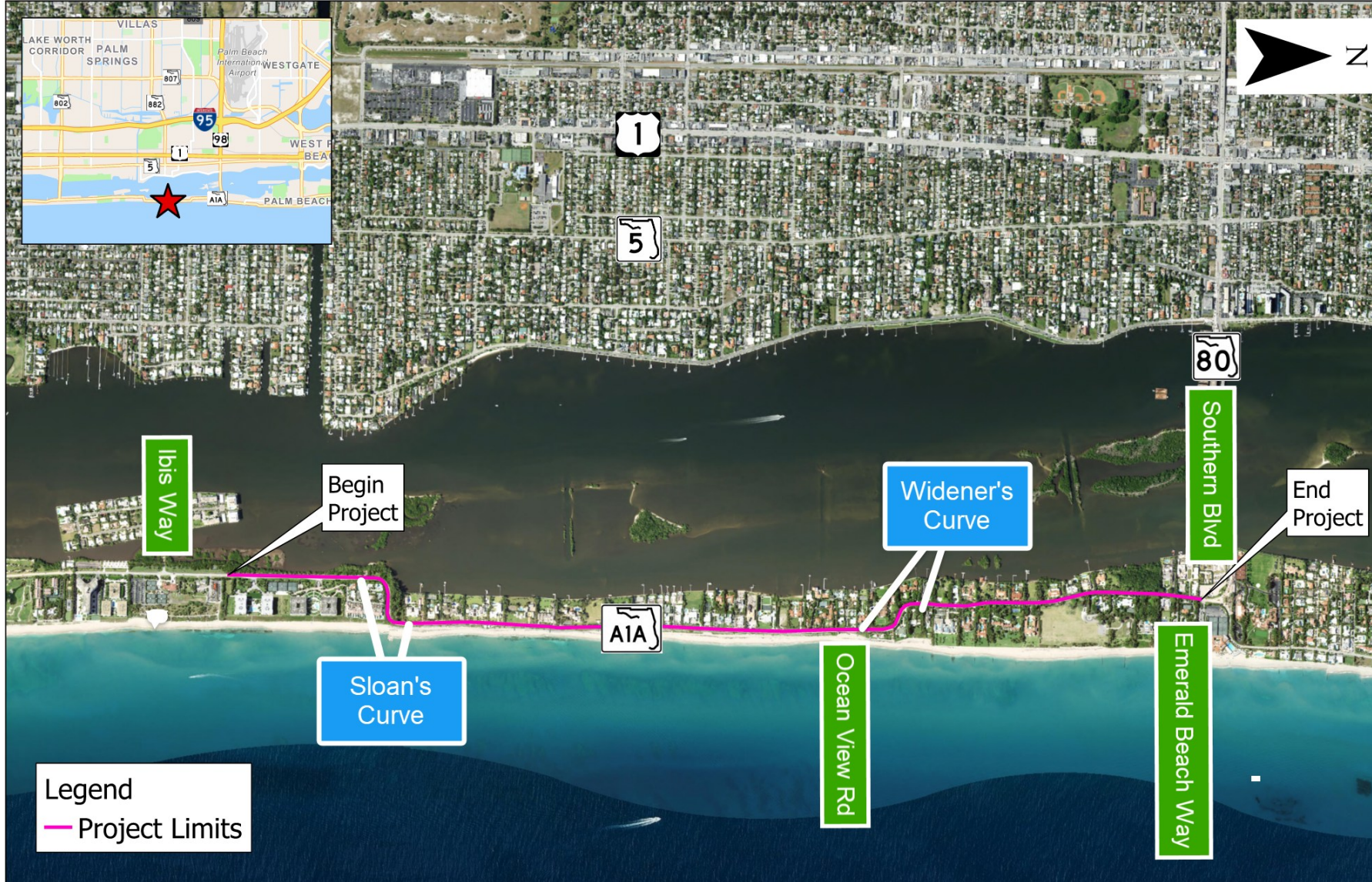


Virtual attendees are also welcome to submit any questions/comments using the GoToWebinar control panel at any time or use the “**Raise Hand**” button on your control panel and a member of our team will respond/unmute you during the open discussion.

In addition, any questions/comments, feel free to submit them to **FDOT Project Manager Vandana Nagole, P.E., CPM** via email to Vandana.Nagole@dot.state.fl.us after the meeting and a response will be provided.

Project Location – Location Map

SR A1A from North of Ibis Way to North of Emerald Beach Way



- Project Work Mix is Resurfacing, Restoration, and Rehabilitation (RRR) Project
- Project is in the Town of Palm Beach in Palm Beach County
- Project length is approximately 2.4 miles

Project Overview

Proposed Improvements:

- Repave the existing roadway
- Widen the paved shoulder to 5-feet (North of Ibis Way to Sloan's Curve)
- Provide 5-foot-wide bicycle lane where feasible and shared lane marking where bicycle lane is not feasible
- Upgrade Signing and pavement markings
- Replace existing 5-foot-wide asphalt sidewalk with a 6-foot-wide concrete sidewalk
- Safety improvements at Sloan's Curve and at Widener's Curve
- Improve drainage as needed



Bicycle markings

- Bicycle lanes are being provided on this project.
 - Limits:
 - Northbound from North of Ibis Way to South of Wideners curve.
 - Southbound from North of Ibis Way to North of Sloans curve.
- Shared lane pavement markings or “sharrows” are being provided on this project.
 - Limits: North of Sloan’s Curve to the North end of the project.
- Sharrows in the center of the travel lane for bicyclists to “command the lane.” Allows bicyclist to ride in the center of the lane for their safety.



SHARROW: (Shar-row)

- **SHARED LANE MARKING** indicating where a bicyclist and motorist must share the lane.

Florida Statute Section, 316.2065 (1) Every person propelling a vehicle by human power has all of the rights and all of the duties applicable to the driver of any other vehicle.



Sharrows Pavement Markings:

1. Pavement marking alerts motorists where to expect bicyclists.
2. Alerts bicyclists on where to use a full lane, under Florida Law.
3. Encourages safe passing.
4. Reduces wrong-way bicycling.

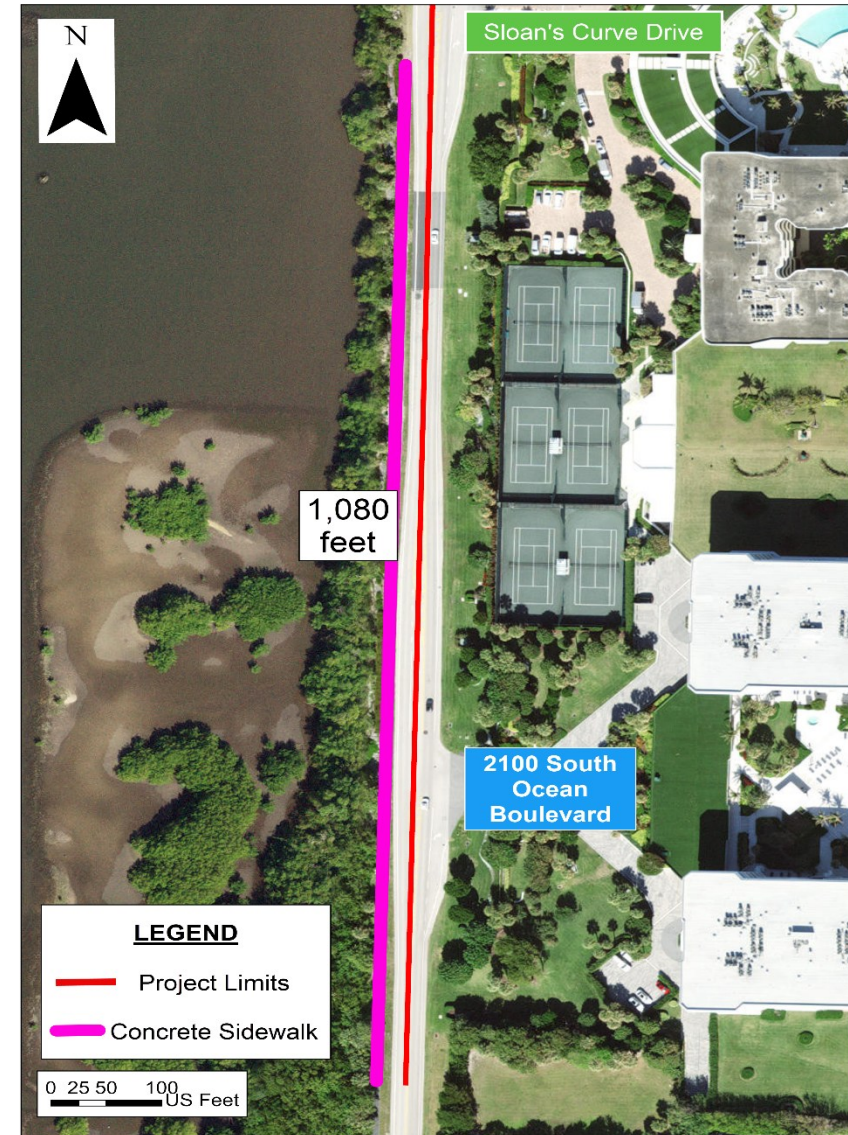


www.AlertTodayFlorida.com

Sidewalk Improvements

Sidewalk Improvements

- 5-foot-wide asphalt sidewalk to 6-foot-wide concrete sidewalk
- Sidewalk replacement length is 1,080 feet.
- Sidewalk to end at the same location as existing sidewalk
- Pedestrian traffic will be maintained during construction



Drainage Improvements

Drainage Improvements

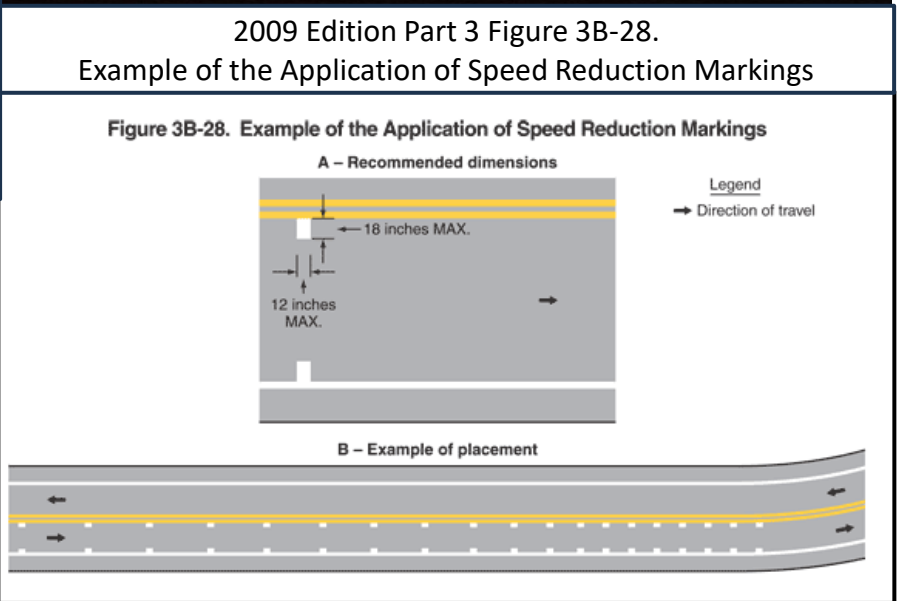
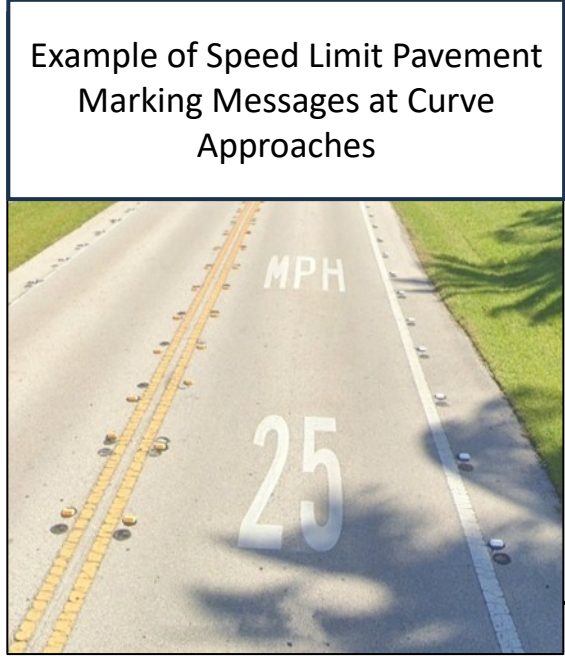
- Replacement of a French drain system
- Adjacent parcels:
 - 1800 South Ocean Boulevard, and
 - 1768 South Ocean Boulevard
- The total length of drainage improvements is approximately 270 feet.



Safety Improvements

Safety Improvements:

- Speed reduction ahead signs
- Advisory speed signs
- Painted speed limits on the pavement
- Reduced speed pavement markings
- Internally illuminated raised pavement markers



Project Location – Roadway Typical Sections

SR A1A from North of Ibis Way to North of Emerald Beach Way



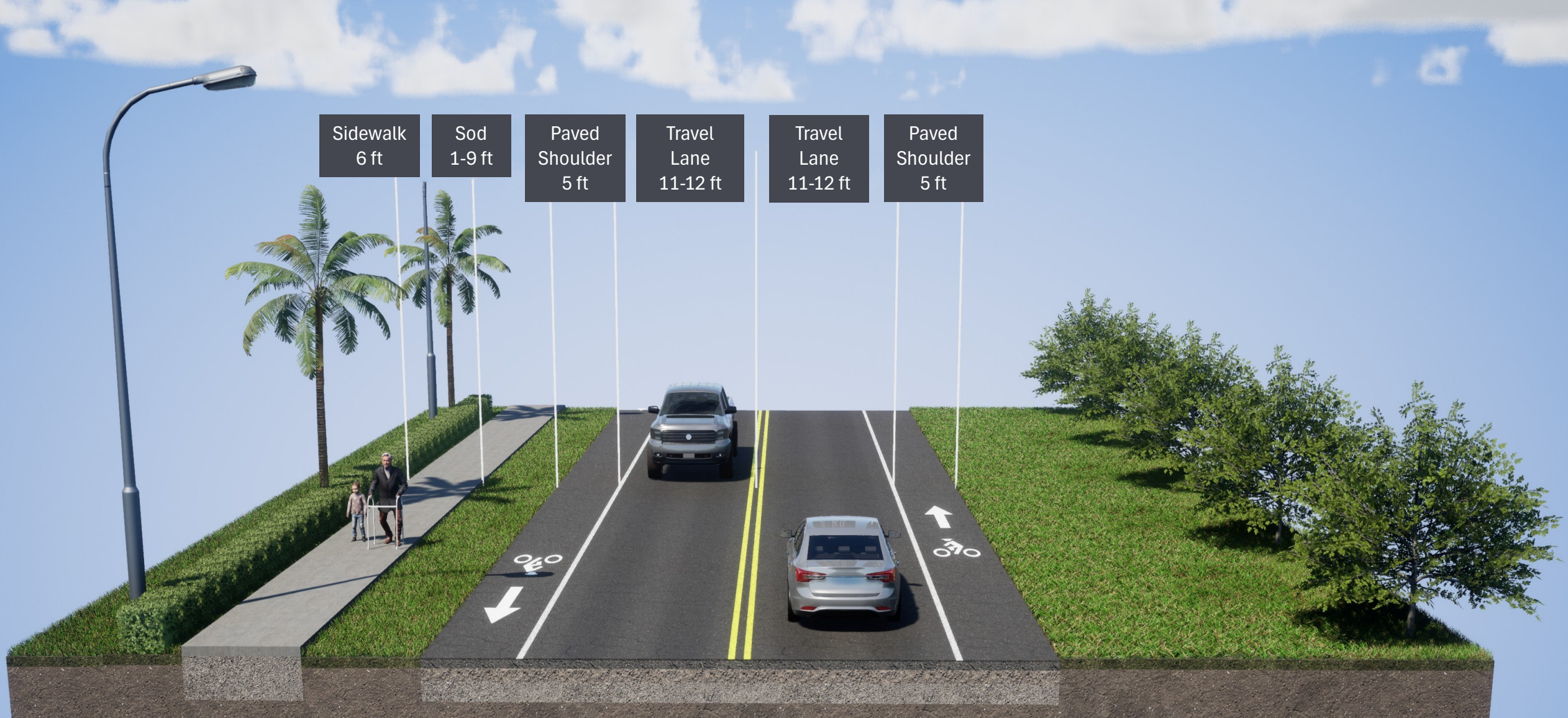
Typical Section Number 1 – Existing Conditions

Field Review Photo: SR A1A just south of Sloans Curve Drive



Typical Section Number 1 - Proposed Conditions

SR A1A from North of Ibis Way to North of Sloan's Curve



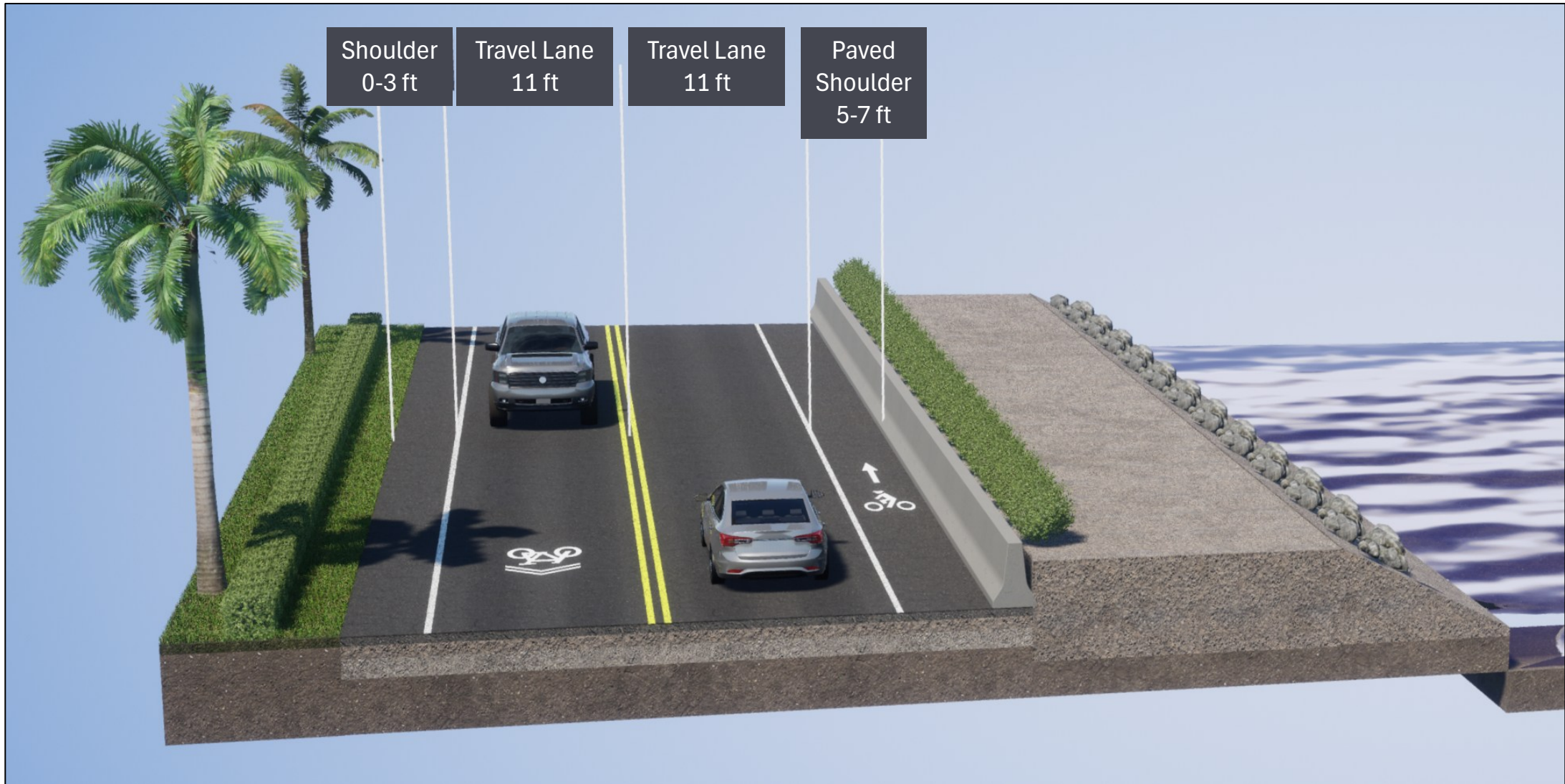
Typical Section Number 2 - Existing Conditions

Field Review Photo: SR A1A just south of Ocean View Road



Typical Section Number 2 - Proposed Conditions

~~SR A1A from~~ SR A1A from North of Sloan's Curve to Ocean View Road



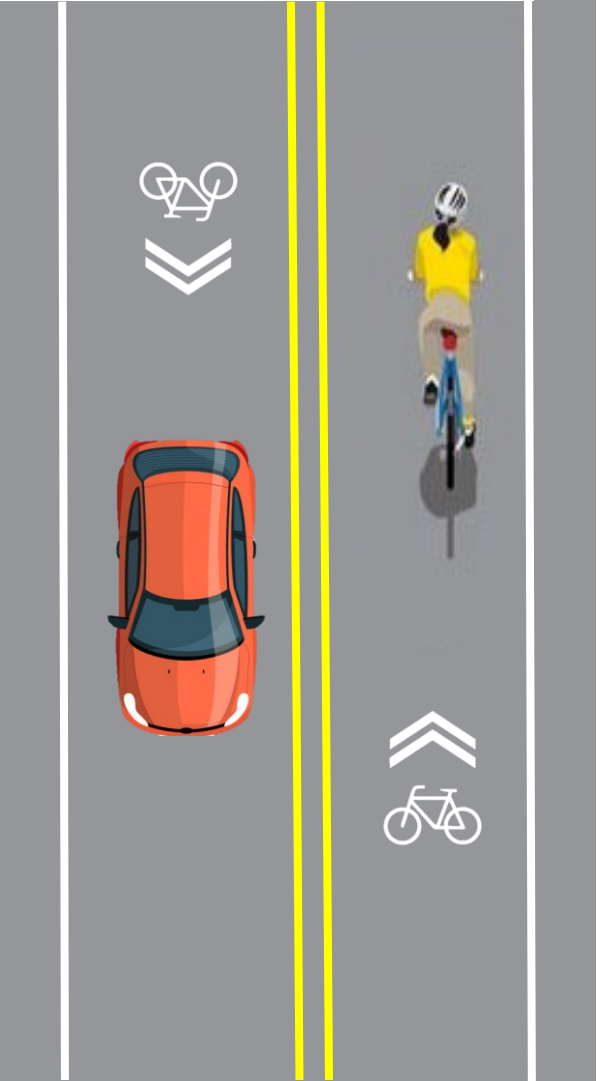
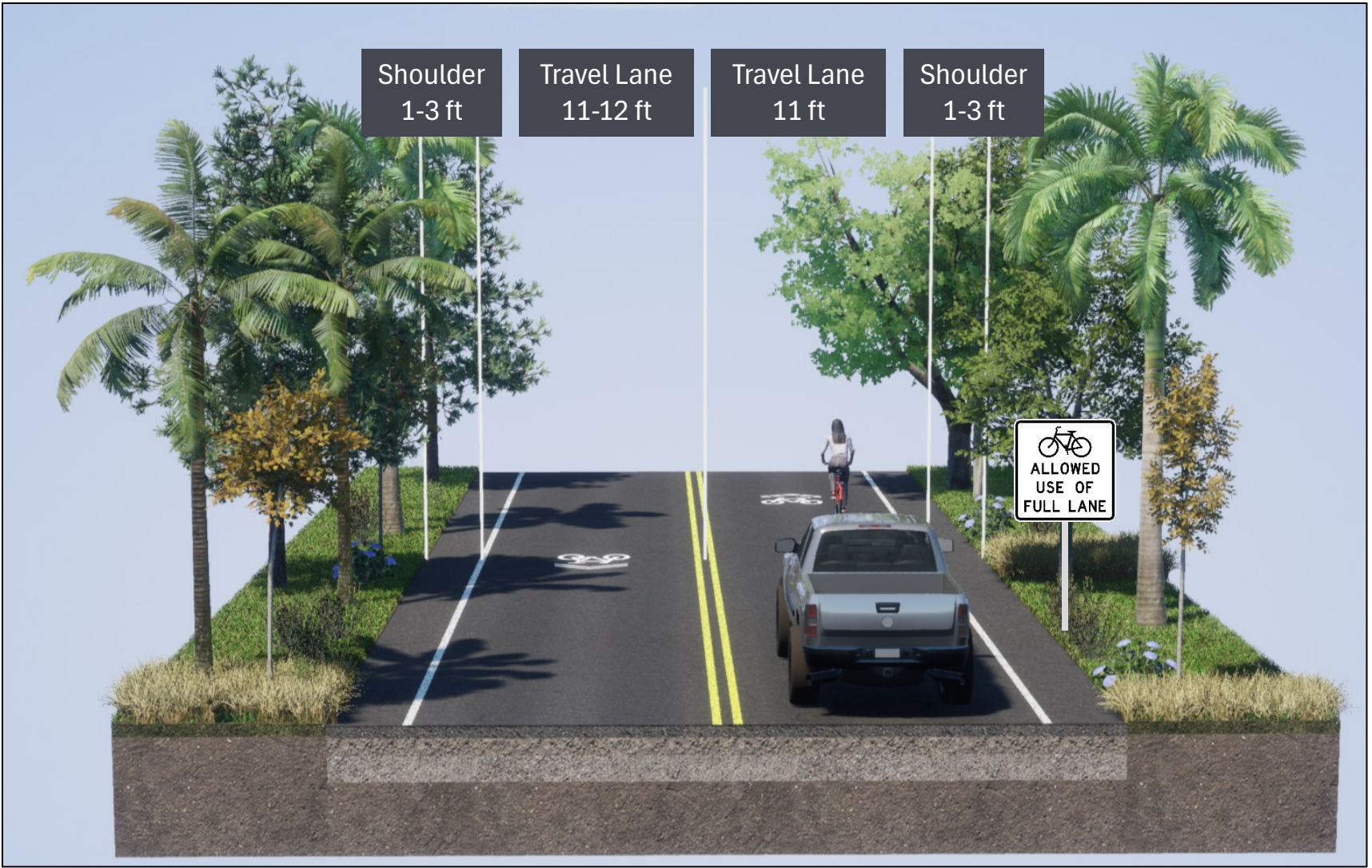
Typical Section Number 3 - Existing Conditions

SR A1A from just south of Ocean Woods Drive



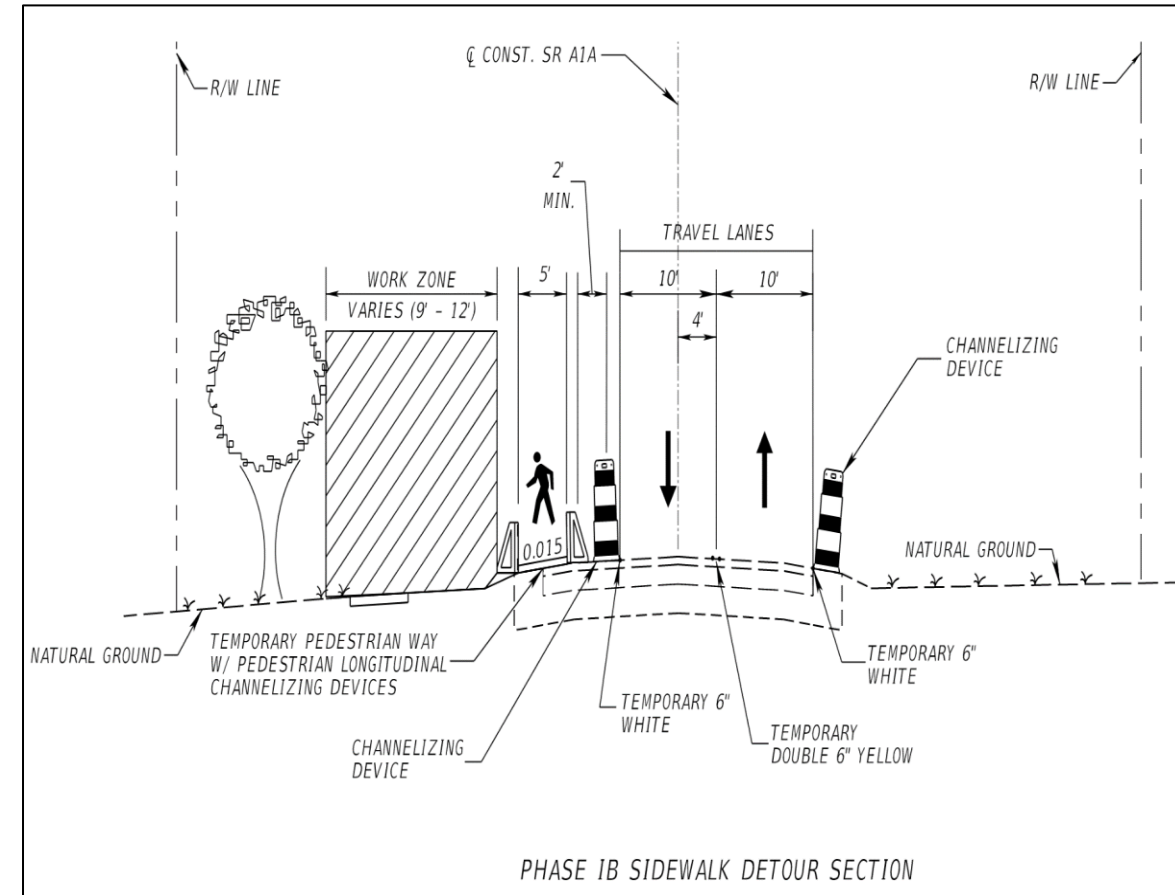
Typical Section Number 3 - Proposed Conditions

SR A1A from Ocean View Road to North of Emerald Beach Way



Temporary Traffic Control Plan

- Work will be done in three (3) phases:
 - Phase I: Drainage and sidewalk construction.
 - Lane closures during daytime and nighttime hours.
 - Phases II and III: Widening and repaving.
 - Lane closures during daytime hours.
- Pedestrian traffic will be maintained with a temporary walkway.
- Access to properties will be maintained during construction.



Temporary Traffic Control Plan

- Phase I:
 - A Lane Closure at 1800 Block and 1768 Block
 - Construction Duration: Approximately six (6) weeks
 - Flagger operation
- Access to properties will be maintained during construction.



Decorative Features during Construction

We anticipate no impacts to decorative features along the shoulder.

Decorative features include the following:

- Artificial turf
- Bollards
- Brick driveways
- Gates
- Roadside mirrors
- Mailboxes



Project Schedule and Cost



Plans Production:

- Final Design Completion: August 2025
- Letting (Open Bids): December 2025

Estimated Construction Start:

- Spring 2026

Estimated Completion:

- Spring 2027

Estimated Construction Cost:

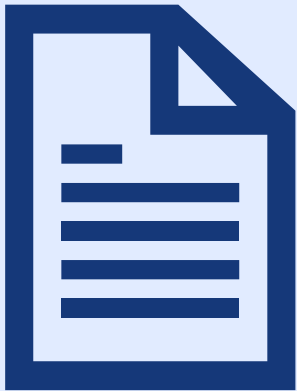
- \$3.2 million



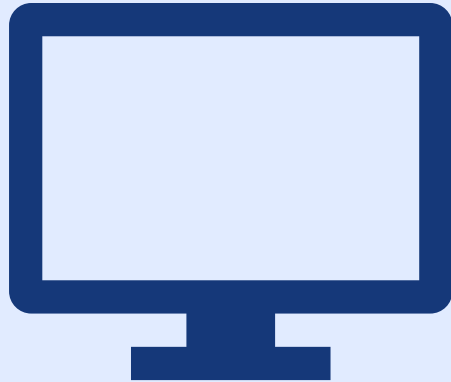
Questions and Answers

Questions and Answers

In-Person



Virtually



E-Mail / Mail

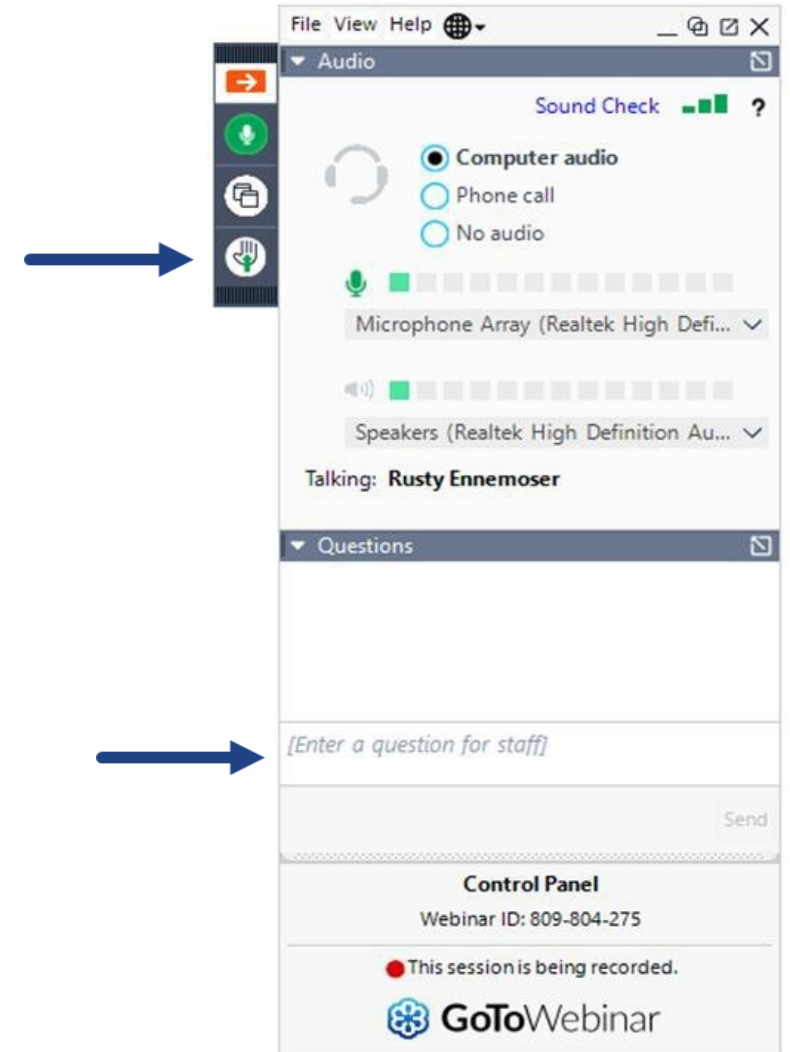


By phone



Online Questions and Answers Instructions

- **Virtual** attendees are welcome to ask a question or provide a comment, by utilizing the question panel or “**Raise Hand**” button on the **Go-To-Webinar control panel**.
- Once your microphone is unmuted, please **provide first your full name and then your question/comment**.
- Your microphone will remain unmuted until the question/comment has been fully addressed.
- If your question is not responded to during the event, a response will be provided in writing following the Public Meeting.



In-Person Questions and Answers Instructions

- Complete a speaker card and provide it to a member of the project team.
- Speaker cards are available at the sign-in table and may also be requested from a member of the project team.
- You may also complete a comment form and submit it in the comment box at tonight's public meeting or by mail to FDOT no later than March 7, 2025.

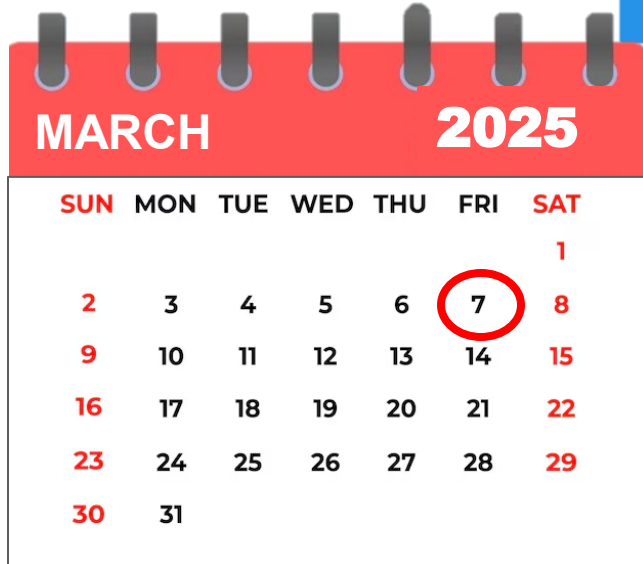


Questions and Answers

Please limit your question/comment to 3 minutes to give everyone an opportunity to speak.



Additional Comments/Questions



- Just a reminder, these questions are not formal comments for the record. If you want to make a formal comment for the workshop record, you can do that through the project website, by mail, or by email by: **Friday, March 7, 2025, which is ten (10) days after the public meeting.**
- **If your question was not responded to during the meeting,** a response will be provided later by mail or email.
- All comments and questions are part of the **Public Record.**
- All comments are weighed equally.
- All registrants will receive a link to the **meeting recording and presentation slides.**

Any additional questions or comments?

Closing, Contact Information, and FDOT Safety Message

Contact Information

If you have additional questions, please contact:
FDOT Project Manager – Ms. Vandana Nagole, P.E., CPM

Vandana.Nagole@dot.state.fl.us



Florida Department of Transportation, District Four
3400 W Commercial Boulevard, Ft. Lauderdale, Florida 33309



(954) 777-4281
Toll Free: +1(866) 336-8435 ext. 4281



Thank you!
Please complete our **exit survey!**

2055 Florida Transportation Plan

Introducing the 2055 Florida Transportation Plan



SINGLE, OVERARCHING PLAN



**GUIDES FLORIDA'S
TRANSPORTATION FUTURE**



**FOUNDATION FOR FLORIDA'S
WORK PROGRAM**

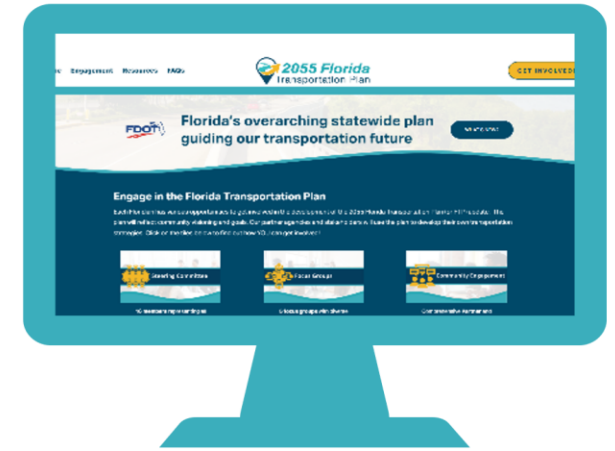


UPDATED EVERY 5 YEARS



**COLLABORATIVE EFFORT WITH
PUBLIC AND PRIVATE PARTNERS**

**Scan to
learn more!
FloridaFTP.com**



FDOT Safety Message



STAY @ THE SCENE

Thank You for Participating in This Public Meeting

Thank you!

Please complete our **exit survey!**